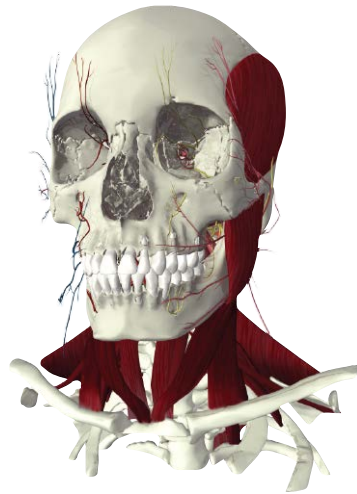
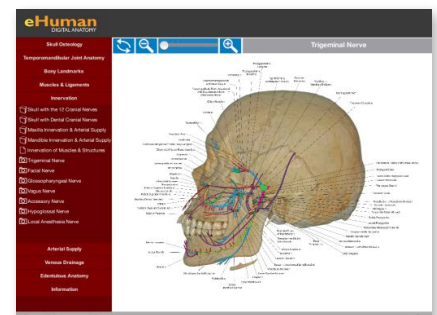
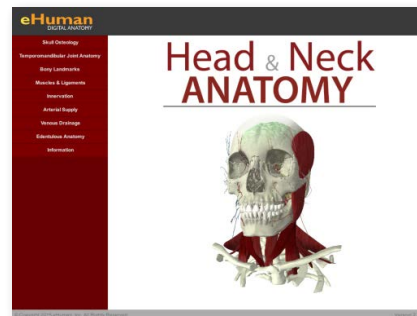


HEAD & NECK ANATOMY ATLAS 2

DATA SHEET

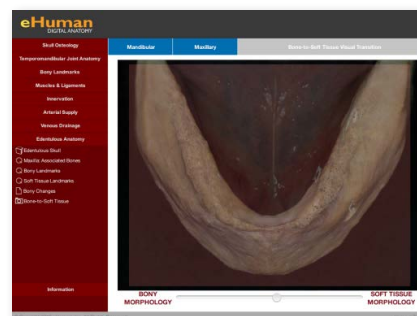


AVAILABLE ON



FEATURING:

- Skull Osteology
- Bony Landmarks of the Skull
- Muscles and Ligaments
- Innervation
- Venous Drainage
- Fully Annotated Cranial Nerves
- Online Access
- Faster loading times and better performance



Head and Neck Anatomy is an all new resource developed in collaboration with Loma Linda University School of Dentistry. This Atlas is part of a growing encyclopedic resource covering human anatomy and includes image libraries, presentations, videos, interactive self assessment, and brand new 3D content from eHuman Digital Anatomy.