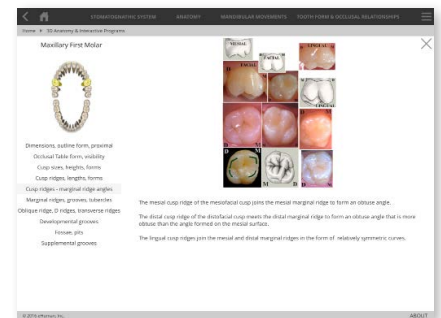
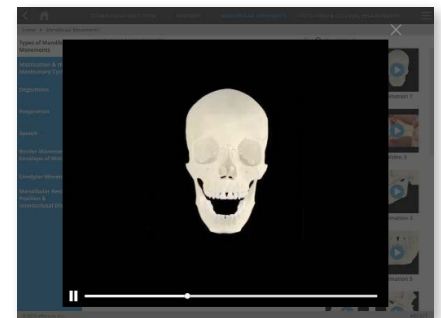
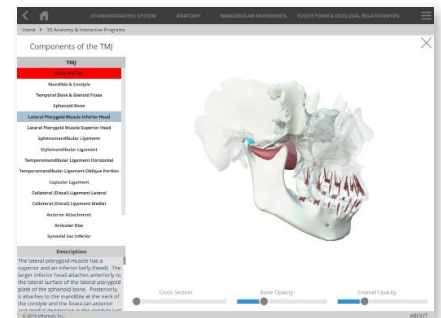
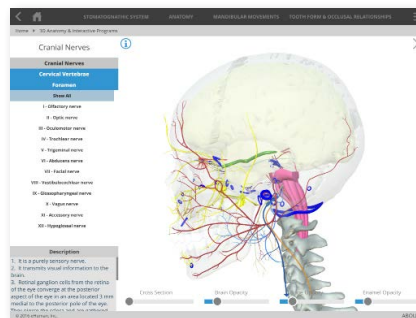
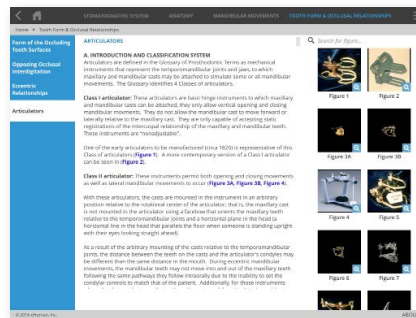
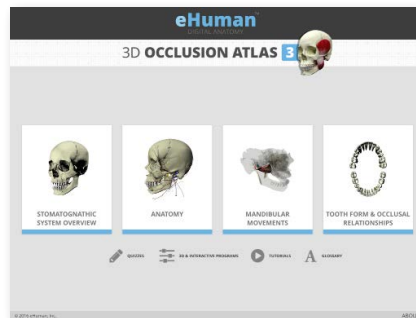


OCCLUSION ATLAS 3

DATA SHEET



AVAILABLE ON



FEATURING:

- Improved user interface for easier navigation and content access
- Faster loading times and better performance
- Cranial nerves plus brainstem model set
- Mandibular & maxillary arterial supply and innervation models
- Occlusion type I, II, III 3D models

Designed for student, practitioner and patient education, eHuman's state-of-the-art Dental Occlusion & TMJ Atlas is a ground-breaking resource combining high-quality computer models of the temporomandibular joint with 3D interactive models and movies of mandibular movement and occlusal relationships.

Detailed anatomy of the TMJ along with its unique features, muscles of mastication, ligaments, innervation and blood supply are displayed in annotated animations based on real anatomy and in dissection images. Anatomically precise illustrations are viewed with state-of-the-art interaction protocols. Includes a number of review and student self-assessment modules.